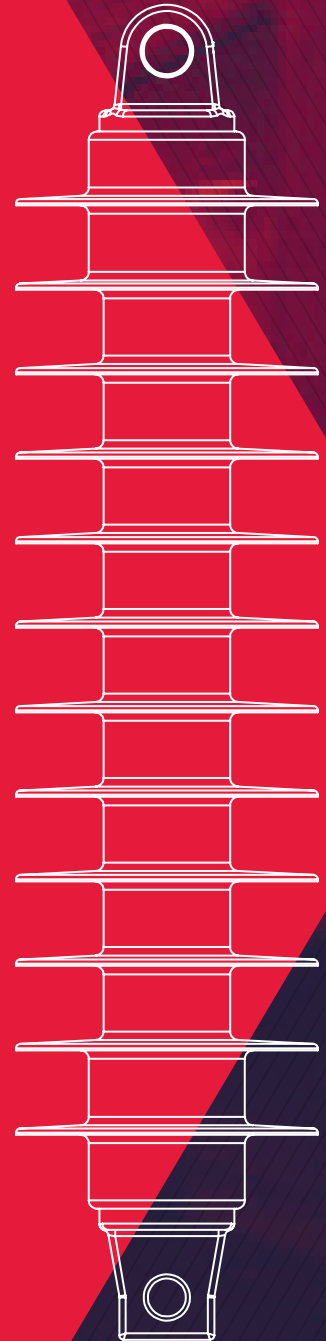
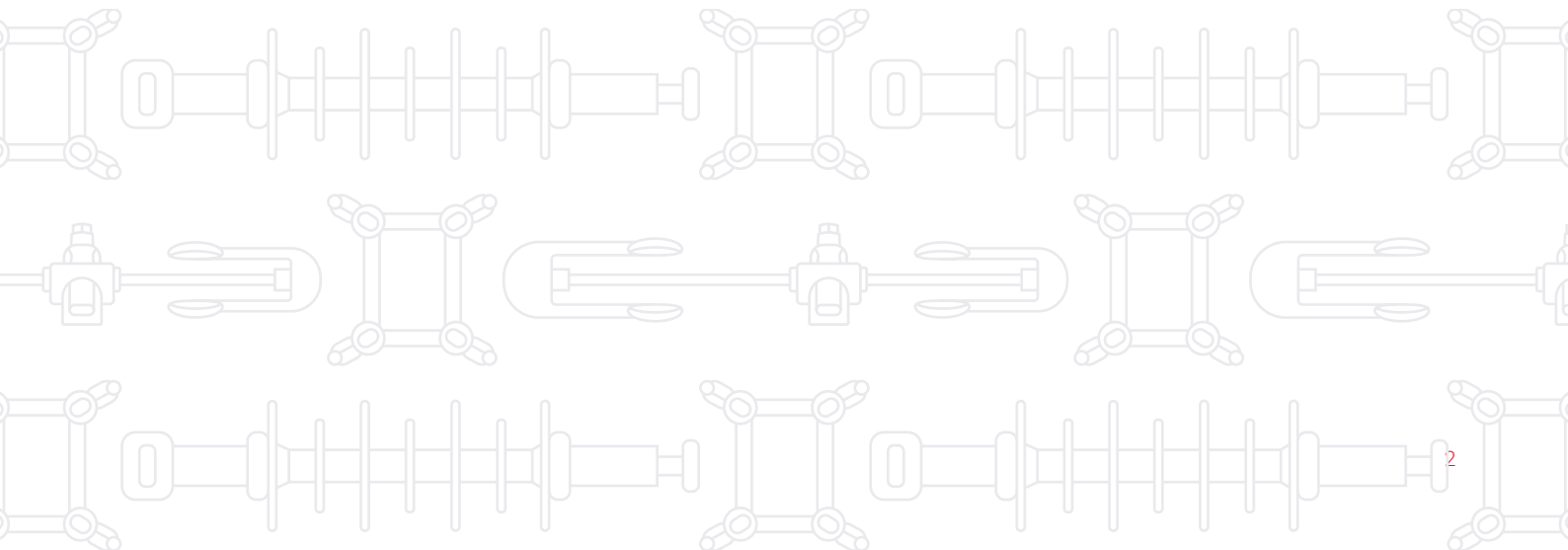
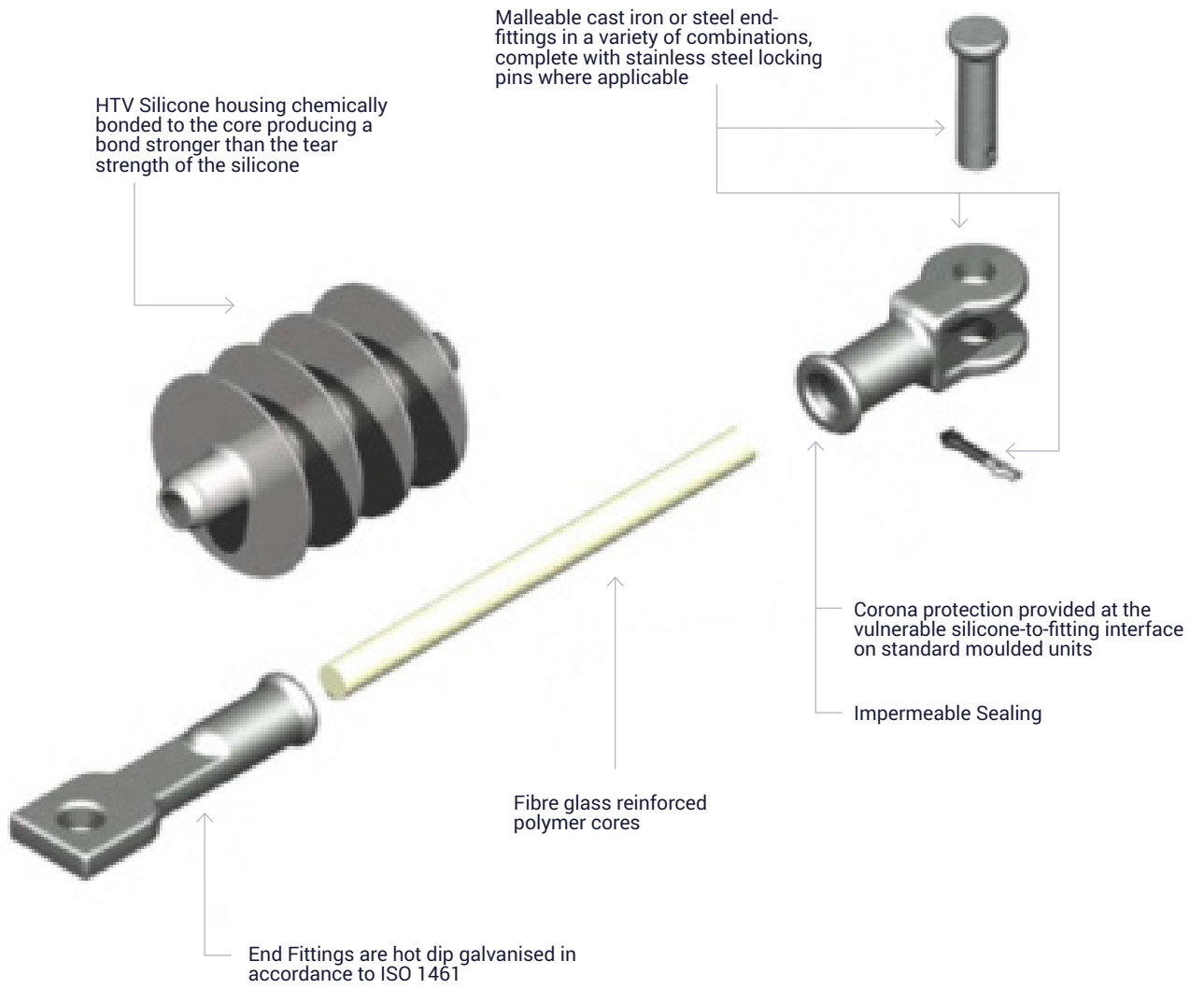


INSULATOR SOLUTIONS

RAILWAY CATENARY SYSTEMS

Innovative solutions for railway systems







Index

1.5 kV Railway Insulators

3 kV Railway Insulators

15 kV Railway Insulators

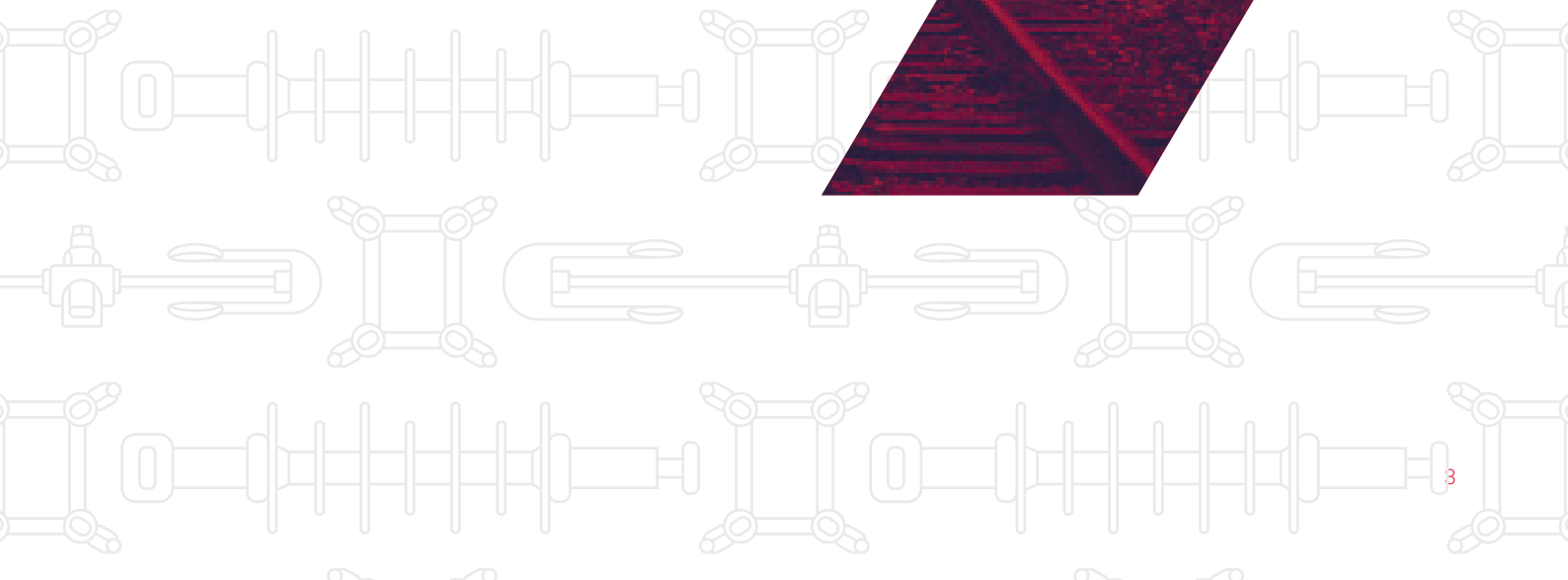
25 kV Railway Insulators

25 kV AC Section Insulators

25 kV AC Neutral Section Insulators

50 kV Railway Insulators

Typical End-fittings Diagrams

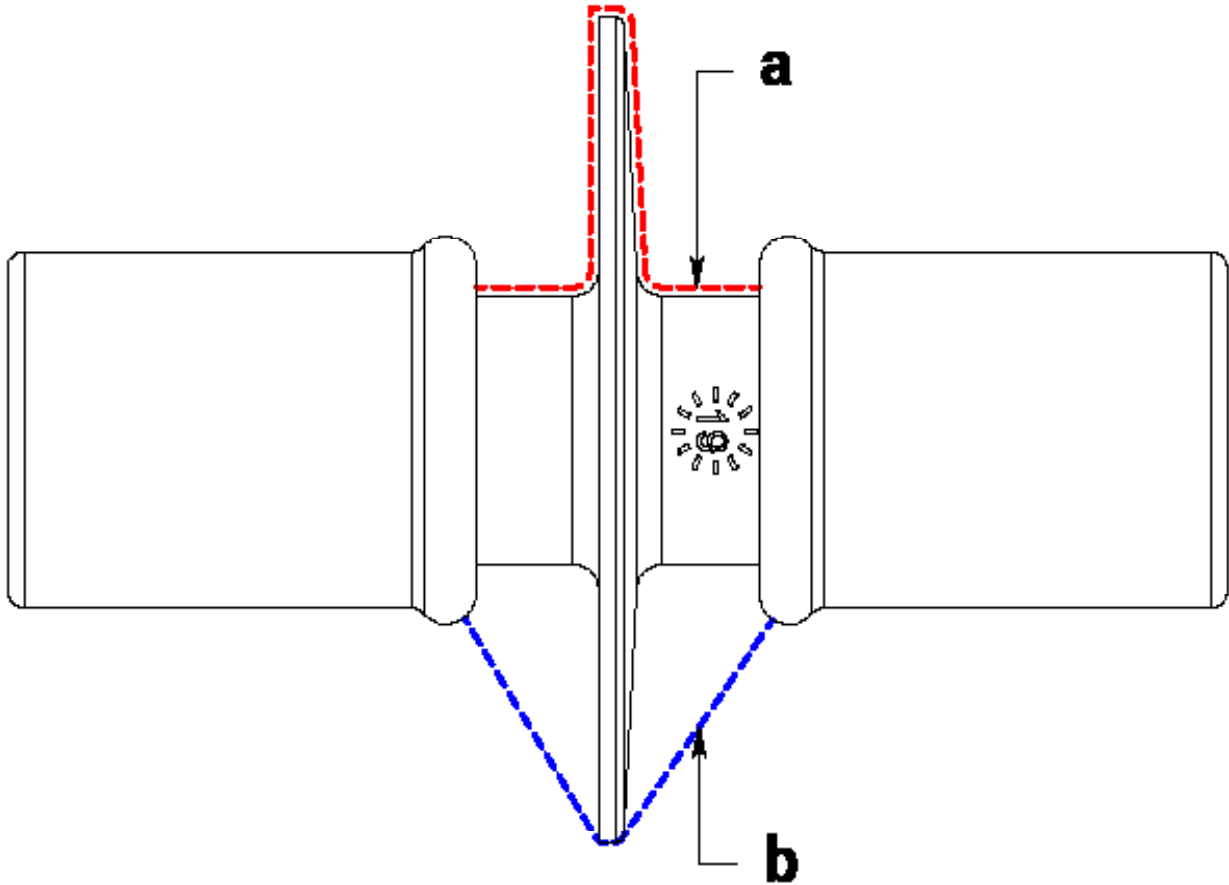




1.5kV Railway Insulators



1.5KV RAILWAY INSULATOR



LEGEND

a	Creepage Distance
b	Dry Arcing Distance

kV RATING	SILICONE PROFILE	BIL (kV)	CREEPAGE DISTANCE (mm)	WET POWER FREQUENCY (kV)	ARCING DISTANCE (mm)	SML (kN)	SCL (kN)
1.5kV	39/94	94	25	15	70	30	8
	110/150	110	38	20	125	30	8

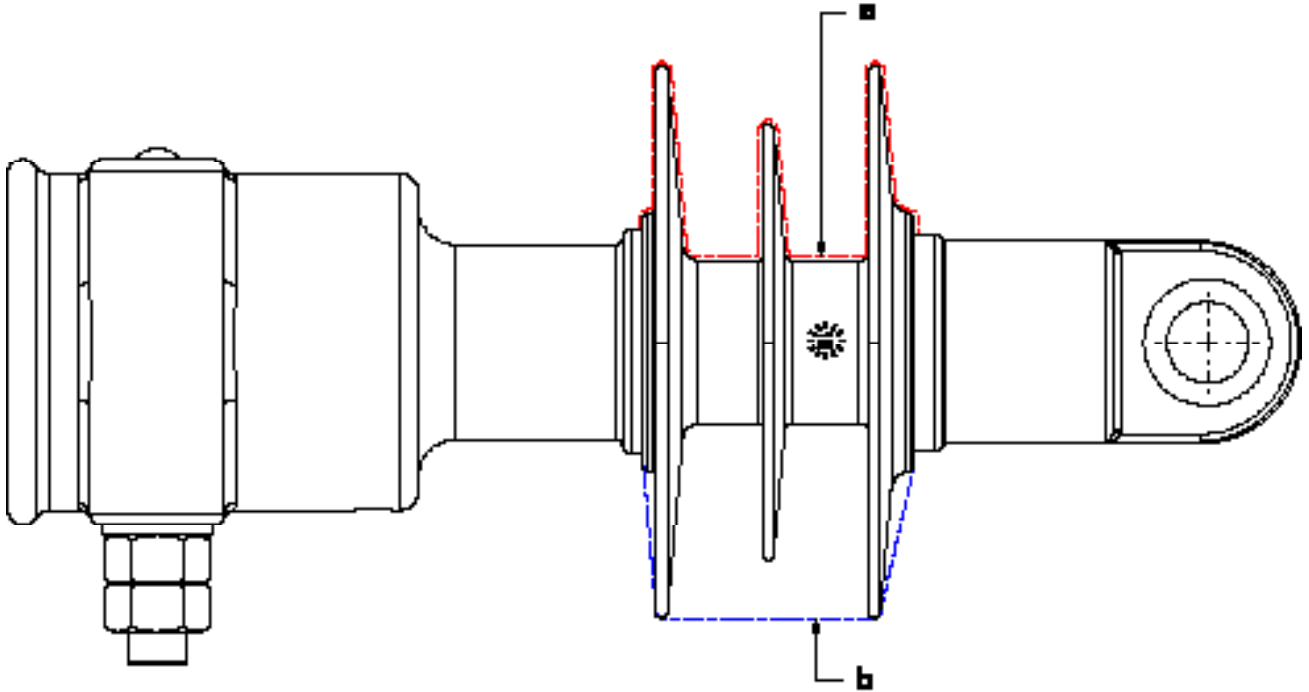
End Fitting Options: Flange (M16, M20) – both Aluminium and Steel variations.



3kV Railway Insulators



3KV RAILWAY INSULATOR



LEGEND

a	Creepage Distance
b	Dry Arcing Distance

kV RATING	SILICONE PROFILE	BIL (kV)	CREEPAGE DISTANCE (mm)	WET POWER FREQUENCY (kV)	ARCING DISTANCE (mm)	SML (kN)	SCL (kN)
3kV	90/305	90	305	35	145	25-60	12.5
	120/400	100	400	40	144		16
	110/335	110	335	38	169	25	-
	130/300	130	300	40	160	40-60	
	140/400	143	400	55	170	70	-
	155/300	155	300	65	221	135	-
	175/390	170	390	48	186	-	15
	175/400	175	400	65	248	54	16
	180/485	185	485	70	255	-	10

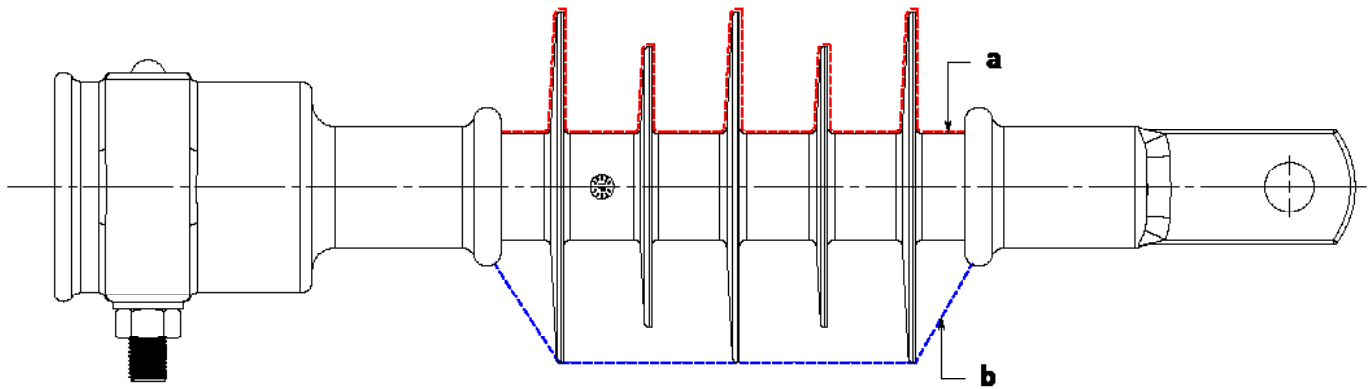
End Fitting Options: Tongue (Round, Square, STD), Clevis, Spade, Tube (42mm-55mm, 55mm-74mm, 70mm), Eye, Flange.

A large, solid red chevron graphic pointing downwards, centered on the page. It is partially overlaid by the title text.A faint, repeating pattern of various railway insulator components in light gray, scattered across the background behind the chevron.

15kV Railway Insulators



15KV RAILWAY INSULATOR



LEGEND

a	Creepage Distance
b	Dry Arcing Distance

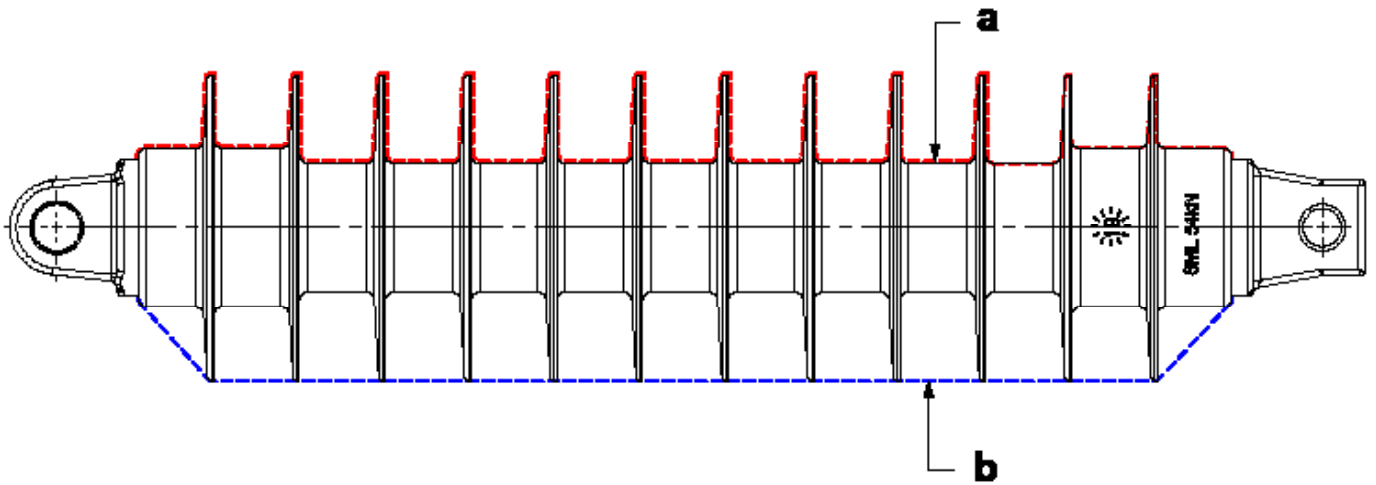
kV RATING	SILICONE PROFILE	BIL (kV)	CREEPAGE DISTANCE (mm)	WET POWER FREQUENCY (kV)	ARCING DISTANCE (mm)	SML (kN)	SCL (kN)
15kV	145/670	145	670	60	255	135	-
	170/610	170	670	70	240	60	10.5-6
	190/750	194	750	88	275	-	10
	175/780	200	780	90	284	60	8.5
	200/965	200	965	80	295	-	10
	200/600	209	600	86	265	54	-
	210/900	210	900	90	320	90	12

End Fitting Options: Tube (Dia. 42mm-55mm, 55mm-70mm), Tongue, Flange, K-Clamp (Dia. 15mm-20mm), Spindle Base (M20).

The background features a repeating pattern of various insulator components, including pin insulators, disc insulators, and cross-arms, rendered in a light gray line-art style. A large, solid red chevron shape is superimposed over the pattern, pointing downwards and to the right.

25kV Railway Insulators

25KV RAILWAY INSULATOR



LEGEND

a	Creepage Distance
b	Dry Arcing Distance

kV RATING	SILICONE PROFILE	BIL (kV)	CREEPAGE DISTANCE (mm)	WET POWER FREQUENCY (kV)	ARCING DISTANCE (mm)	SML (kN)	SCL (kN)
25kV	240/1200	240	1200	95	332	70	54
	250/1238	250	1238	115-125	461	135-160	-
	250/1240	250	1240	95-125	454	45-60	6-8
	275/1120	250	1120	135	360	60	10
	170/1200	250	1200	110-135	360	60	10
	250/1350	250	1350	120	385	-	19.2
	250/1340	250	1340	125	470	90	10
	250/1200	250	1200	95	410	100	15
	250/1118	255	1118	114	350	-	-
	300/1500	280	1500	135	450	90	10.5
	300/1200	285	1200	146	430	50-70	-
	300/1850	300	1850	140	495	80	6.6
	250/1500	300	1500	150	430	50	-
	310/1500	308	1500	162	468	70	-
	250/930	310	930	110	389	54	15
	380/1580	320	1580	175	574	60	13.5
	335/1395	335	1395	175	545	-	16
	380/1476	360	1476	200	580	10-54	5-8
	430/1588	430	1588	230	580	54	-

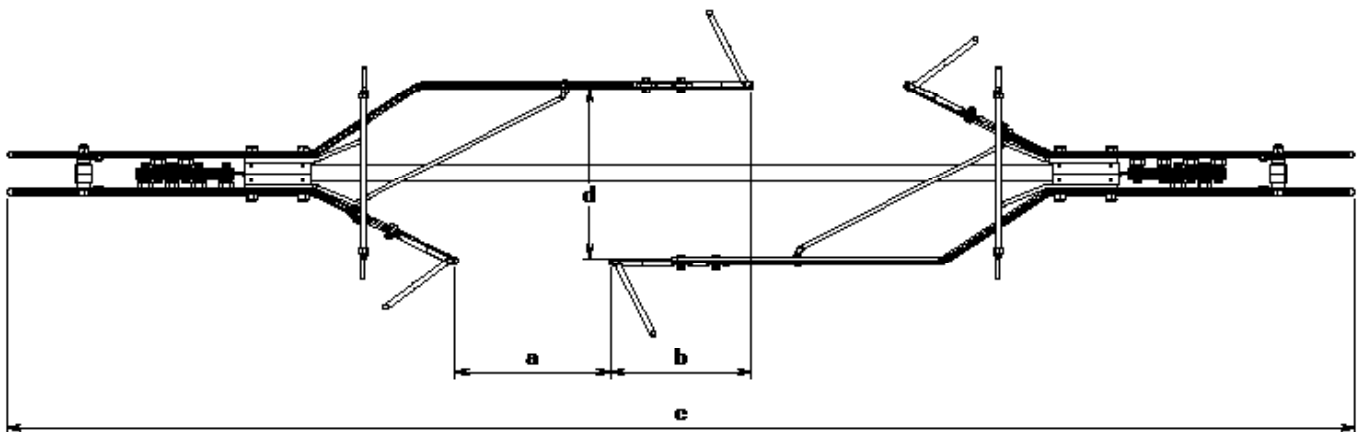
End Fitting Options: Tube (Dia. 25mm-30mm, 42mm-55mm, 55mm-70mm), Hook Tongue, PCD Flanges, K Clamp (Dia. 15mm-20mm), Clevis, Tongue (Square, Round and STD), Spade, Trunnion Clamp.

The background features a repeating pattern of various insulator diagrams in a light gray color. A large, solid red chevron shape is superimposed over the center of the page, pointing downwards and to the right.

25kV AC Section Insulators

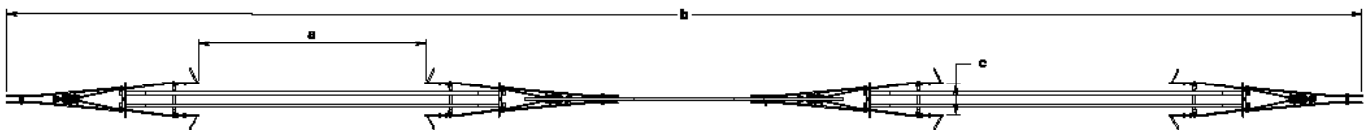


25KV AC SECTION INSULATORS



CONTACT WIRE RANGE (mm ²)	CREEPAGE (mm)	ARCING HORN DISTANCE - a (mm)	OVERLAP OF SKIDS - b (mm)	OVERALL LENGTH - c (mm)	MAXIMUM DISTANCE BETWEEN SKIDS - d (mm)	SPECIFIED TENSILE LOAD (kN)	NORMAL WORKING LOAD (kN)	MAXIMUM WORKING LOAD (kN)	MAXIMUM OPERATING SPEED (km/h)	WEIGHT (kg)
80-107	1100	220	220	2793	250	80	15	25.3	90	16.2
161	1100	220	220	2793	250	80	15	25.3	90	15.3

25KV AC NEUTRAL SECTION INSULATORS



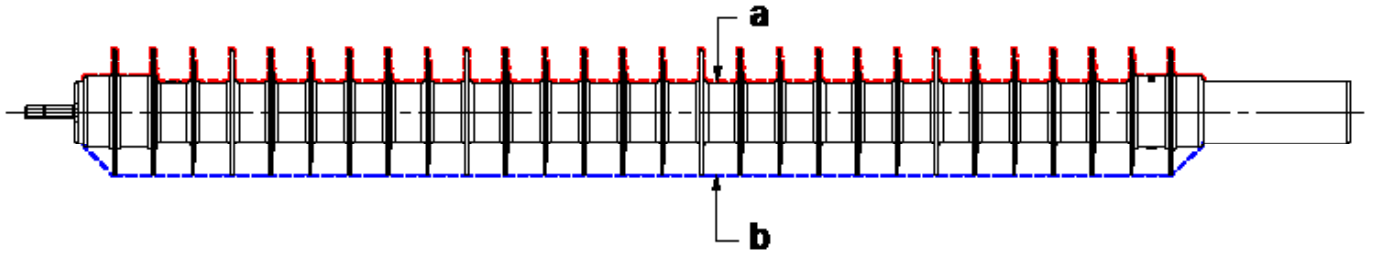
CONTACT WIRE RANGE (mm ²)	CREEPAGE (mm)	ARCING HORN DISTANCE - a (mm)	OVERALL LENGTH - VARIABLE - b (mm)	MAXIMUM DISTANCE BETWEEN SKIDS - c (mm)	SPECIFIED TENSILE LOAD (kN)	NORMAL WORKING LOAD (kN)	MAXIMUM WORKING LOAD (kN)	MAXIMUM OPERATING SPEED (km/h)	WEIGHT (kg)
80-107	1700	1696	9600 - 102000	230	80	15	25.3	90	70
161	1700	1696	9600 - 102000	230	80	15	25.3	90	74.52

The background features a repeating pattern of various insulator components, including pin insulators, disc insulators, and cross-arms, rendered in a light grey line-art style. A large, solid red chevron shape is superimposed over the pattern, pointing downwards and to the right.

50kV Railway Insulators



50KV RAILWAY INSULATOR

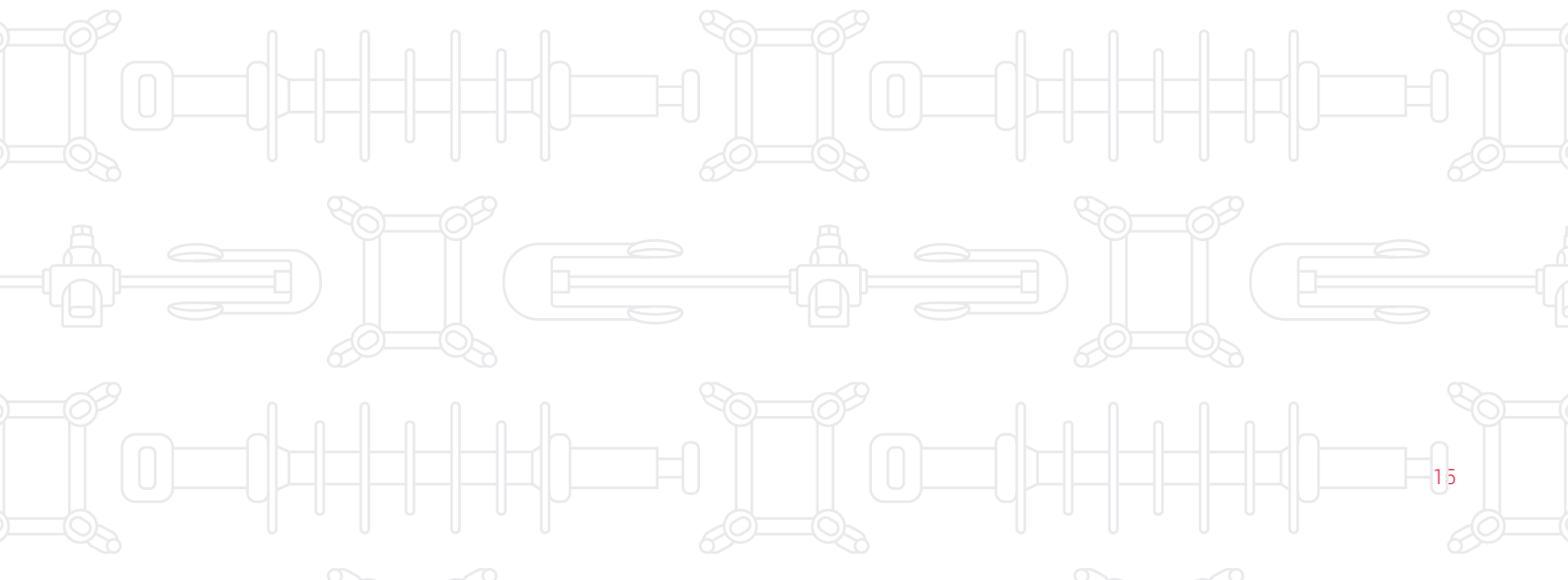


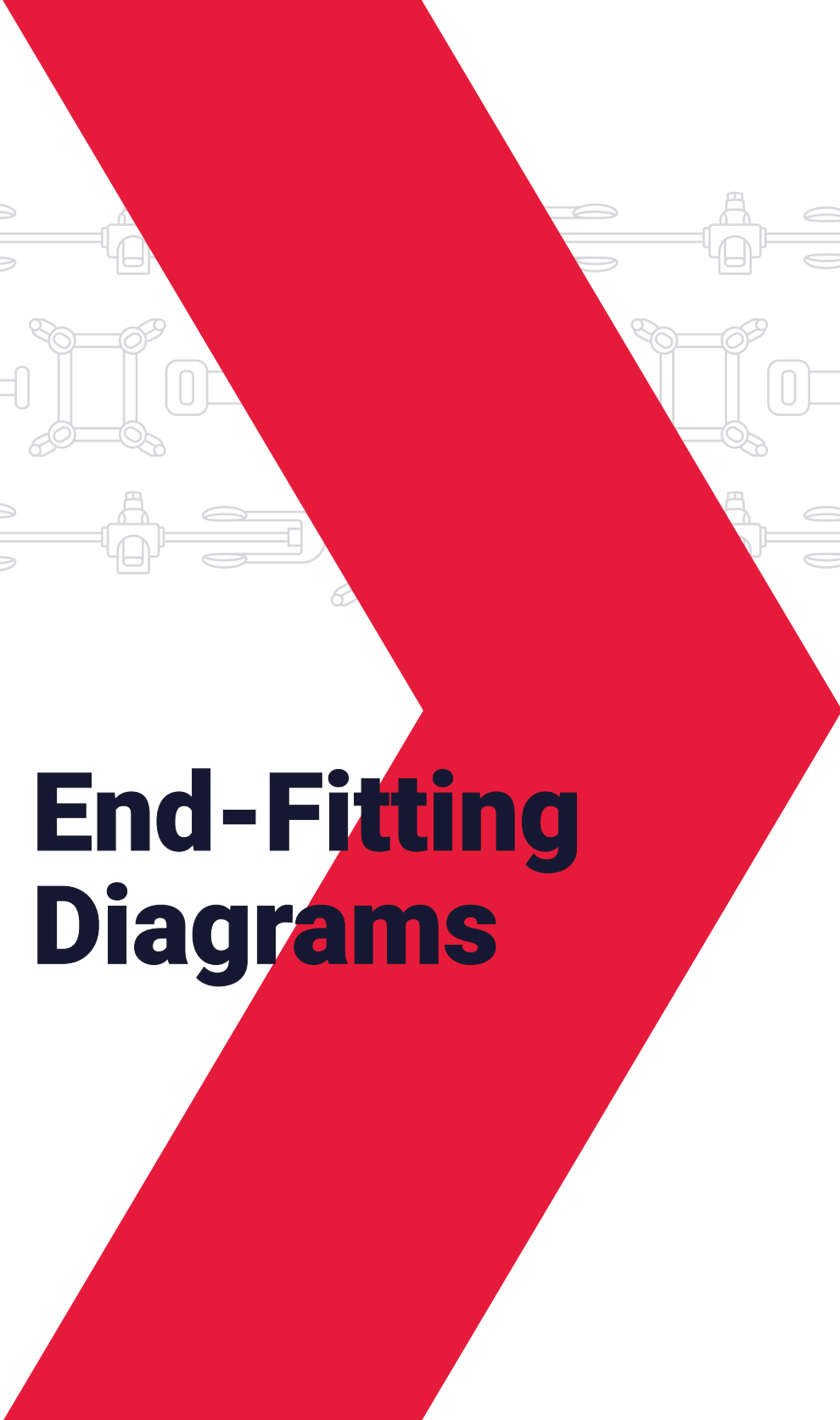
LEGEND

a	Creepage Distance
b	Dry Arcing Distance

kV RATING	SILICONE PROFILE	BIL (kV)	CREEPAGE DISTANCE (mm)	WET POWER FREQUENCY (kV)	ARCING DISTANCE (mm)	SML (kN)	SCL (kN)
50kV	740/2780	740	2780	380	1174-1218	54	8

End Fitting Options: Square Tongue (13mm), Spade.

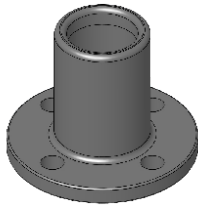




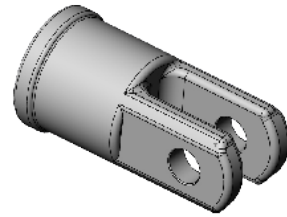
End-Fitting Diagrams



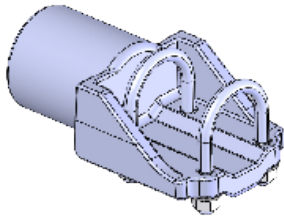
FLANGE



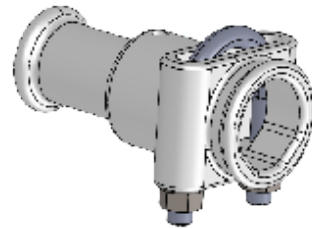
CLEVIS



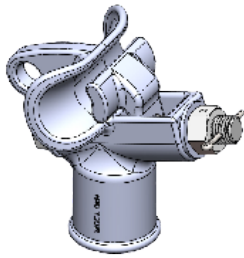
SPADE



TUBE



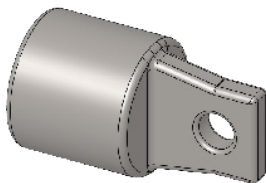
K - CLAMP



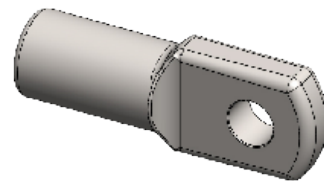
SPINDLE BASE



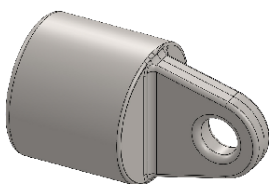
TONGUE - SQUARE



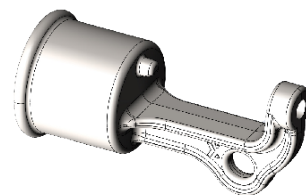
TONGUE - STANDARD



TONGUE - ROUND



TRUNNION CLAMP



TAILORED POWER SOLUTIONS

Vexila's electrical technology solutions are designed for all types of power, including solar, hydroelectric and wind. You can rely on us to provide whatever you need when it comes to electrical technology for overhead lines, ultra-high voltage transmission, overhead electrical conductors, railway catenary systems, cables, switchgear and control gear.

It's the combination of accessible, intelligent solutions, decades of experience, skilled professionals and a sense of purpose that sets Vexila apart.

The list of the products on the catalogue are non-exhaustive. Please make enquiries to the Vexila Head Office.



T +27 33 397 5400
F +27 33 387 6377
E info@vexila.com

9 Willowton Road
Pietermaritzburg 3201
South Africa